

Directions for use: Information for users

# **K-GEIST 100** KONZENTRAT

Concentrate made from 100% artistic spirit

Active ingredient: Artistic spirit

**Please read these instructions carefully. They contain important information.**

- K-Geist 100 is a non-prescription preparation. For maximum effect, it must be taken as directed below.
- Please keep these instructions for future reference
- If you have any questions about this product, please contact [info@k-geist100.com](mailto:info@k-geist100.com).
- If any of the side effects listed below have a significant impact on your day-to-day performance, or if you experience any side effects not indicated here, please contact us ([info@k-geist100.com](mailto:info@k-geist100.com)).

These instructions include:

1. What is K-Geist 100 -and when do I need it?
2. Before taking K-Geist 100
3. How to take K-Geist 100
4. Can K-Geist cause problems?
5. How to store K-Geist 100
6. Other information

## **1. What is K-Geist 100 and when do I need it?**

K-Geist 100 is a concentrate made from 100% artistic spirit. Taken as directed, it can increase your inspiration levels. It is safe to take over the shorter or longer term.

### **Getting the most from K-Geist 100:**

- Broadens your horizons
- Helps you break free from your habitual patterns of perception
- Increases your powers of association and flexibility
- Strengthens your belief in your own creative potential
- Heightens your sensitivity to problems
- Strengthens your capacity to restructure and transform
- Raises your energy levels and increases your potential for motivation
- Strengthens your capacity for controlled psychological regression
- Raises your tolerance levels for conflict and frustration

- Raises your ability to deal with complexity
- Increases your independence

## **2. Before taking K-Geist 100**

### **Do not use K-Geist 100:**

- If you are known to respond hypersensitively to change.

### **Take special care when using K-Geist 100:**

- If you work in an environment that is hostile to innovation
- If you are in a highly traditional family environment

### **Taking K-Geist 100 in combination with medicines:**

K-Geist 100 is not known to be influenced by drugs in any way.

### **Combining K-Geist 100 with food and drink:**

The effects of K-Geist 100 may be influenced by detrimental factors in your lifestyle and by the consumption of stimulants.

### **If you are pregnant or breast-feeding:**

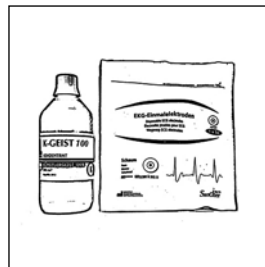
K-Geist 100 is safe to use during pregnancy and breast-feeding.

### **Driving and operating machinery:**

K-Geist 100 is not known to require any special precautions.

## **3. How to take K-Geist 100**

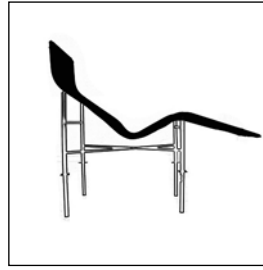
A single bottle of ready-to-use K-Geist 100 contains 50 transfusions. These can be administered as required.



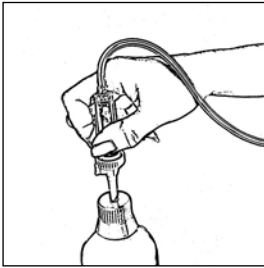
(1) Provide your K-Geist 100 transfusion bottle, the disposable ECG electrodes and the transfusion drip.



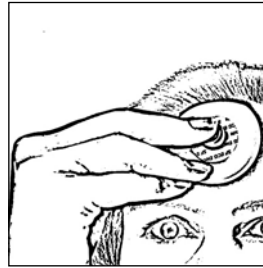
(2) Remove the seal on the lid of the bottle.



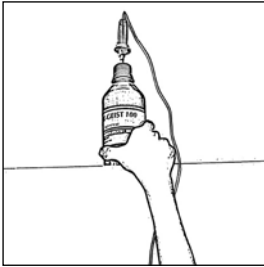
(6) Sit or lie in a comfortable position.



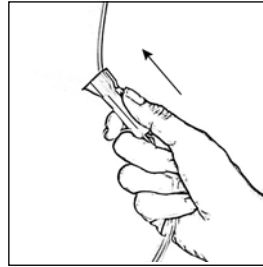
(3) Press the white, pointed end of the transfusion hose firmly into the opening of the bottle.



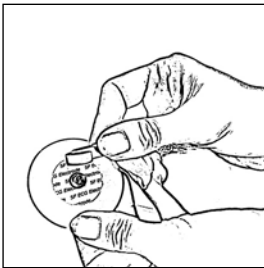
(7) Remove the sticky label from the electrode and press the electrode gently onto your forehead.



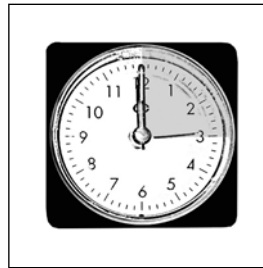
(4) Position the K-Geist 100 bottle above your head, for example on a shelf, ensuring that it is stable and does not fall.



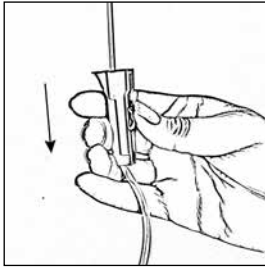
(8) Turn the small white wheel on the orange regulator upwards (towards the bottle) to start the flow.



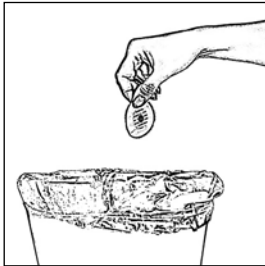
(5) Clip the disposable electrode onto the orange electrode holder.



(9) Wait for 5 to 15 minutes for the artistic spirit to enter your system.



(10) Turn the small white wheel on the regulator downwards (towards yourself) to close off the flow.



(11) Pull the disposable electrode off your forehead and dispose of it. (It is safe to put it in your household waste.)



(12) Remove the transfusion pipe from the bottle. Close the bottle carefully, sealing it with one of the red-dot stickers provided.

**Other information:**

- Make sure that you carry out your transfusion in a relaxing and undisturbed environment.
- Always remember to replace the seal on the bottle after use to prevent any K-Geist 100 from escaping.

**4. Can K-Geist 100 cause problems?**

Like any substance, K-Geist 100 can have side effects, although not all users experience them.

Frequencies of side-effect occurrences are quantified as follows:

Very frequent	more than one user out of every 10
Often	between 1 and 10 users out of every 100
Occasional	between 1 and 10 users out of every 1000
Seldom	between 1 and 10 users out of every 10,000
Extremely seldom	less than one user out of every 10,000
Unknown	frequency of occurrence cannot be deduced from data currently available

**Possible side effects:**

- There have been very frequent reports of problems in the workplace following a transfusion of K-Geist 100. These are generally caused by the strong flow of ideas, which can cause irritation among colleagues and supervisors.
- Users have occasionally reported tendencies to undergo psychological regression. Left untreated, these generally subside within 90 minutes.

**5. How to store K-Geist 100**

K-Geist 100 should be stored in a visible, accessible place. It can be administered anywhere using the special case provided. It need not be stored in a cool, dry place, away from direct heat and sunlight. If travelling by air, K-Geist 100 should be taken on-board the aircraft as hand luggage.

**Storing K-Geist 100 after opening:**

K-Geist 100 can be stored for an unlimited period after opening.

**6. Other information**

K-Geist 100 comes in a transparent plastic case. A single case contains::

- 1 transfusion bottle of K-Geist 100 (100% artistic spirit, 500 cm<sup>3</sup> of concentrate)
- 1 transfusion drip with regulator and electrode holder  
G= gravity
- 50 disposable ECG electrodes
- 50 red adhesive seals
- 1 DVD with two information videos
- 2 brochures (German and English) describing the product with directions for use

**Manufacturer**

www.k-geist100.com

info@k-geist100.com

K-Geist 100 c/o Birthe Blauth

Gollierstr. 70

80339 Munich / Germany

**This information was last updated in:**

June 2018

---

**Other information:**

Fill levels vary for technical reasons. K-Geist 100 is suitable for diabetics.